

# A ROCHA BC IMPACT REPORT 2024/25



## A MESSAGE FROM THE BC DIRECTORS

**Our mission is to live out God's calling to care for creation, and to equip others to do likewise.**



Thank you for your interest in A Rocha and your care of God's good creation! It has been a joy for us to lead the work of A Rocha in BC these past 15 years:

- Seeing children wonder at the intricacies of a plant or animal;
- Watching an intern discover the rare Salish Sucker fish;
- Partnering with the Semiahmoo First Nation & other environmental partners toward cleaning up Semiahmoo Bay;
- Engaging churches and Christian colleges in creation care; &
- Training young adults in agriculture, science & education.

A Rocha BC's year-round staff team of 22 are a crew of amazing committed, people, spurred on by love of God, to study, teach and grow. The team expands by 15 every summer with student workers, and an additional 10 seasonally with our residents-in-training.

Landscapes, waterways, and people are being transformed through the work of A Rocha in BC, with the help of many faithful funders and partners.

A heartfelt thanks to you for however you are involved!



**We envision a hope-filled world where communities flourish as people and nature thrive together.**

**–DAVID & SHAUNA ANDERSON**

4

Kilometers of salmon spawning habitat restored by a new fishway

175

Acres of land stewarded or restored annually

29

Species of flora and fauna studied annually

30

Landowners engaged in practical stewardship initiatives

23

Years of habitat restoration and species monitoring



## »» NURTURING BIODIVERSITY



See [video](#) of the project.



### Shared Waters

A Rocha reignited the Shared Waters Alliance, a trans-boundary, multi-stakeholder coalition working to clean up the Tatalu (Little Campbell River) to improve water quality in Boundary Bay, with a primary goal being that the Semiahmoo First Nation can harvest their traditional food sources once again (shellfish, crab and salmon). Today, we have 48 diverse stakeholders working together on this project.

### Jacobsen Creek Fishway (Tatalu Watershed)

Jacobsen Creek was a tributary with an impassable culvert blocking salmon migration for over 30 years. In 2023, A Rocha constructed a fishway. Coho, Chinook, and Chum salmon, and Rainbow and Cutthroat trout are now able to access 3.8 km of historic spawning habitat!



See [video](#) for the fishway story.



### Northern BC

A Rocha's project in Houston, BC has been developing a stronger partnership with the Office of the Wet'suwet'en Natural Resources Department in connection with shared goals of restoring salmon habitat in the Upper Bulkley Watershed. We have also developed a Nature Center, a community asset to the Bulkley Valley!

# FARMING AS CONSERVATION



- 7K pounds of vegetables and herbs donated
- 3K seedlings distributed to local partners
- 2 acres transitioning to no-till
- 9 farm apprentices, residential students & summer workers trained
- 24 weeks of harvest
- 50 families receiving donated veggies each week
- 157 households picking up weekly produce





## »»» LIVE-IN TRAINING

- 3–6–9 month residential immersive training in conservation for young adults
- Investing in emerging leaders in a community setting rooted in Christian values
- Youth learn practical skills in education, conservation, and agriculture, integrating conservation values into hopeful solutions



Live in an environmental centre with a lively community



Practice sustainable practices from shopping, cooking and more



Learn from different professionals at A Rocha



"This summer at A Rocha has been one of abundance and joy. Annie Dillard writes that "how we spend our days is how we spend our lives," and what a wonderful life I've gotten to live while a resident here at A Rocha! From helping refugee families plant garden boxes outside their apartment complex to watching kids search for salmon fry glistening against the sandy bottom of the river, from wandering in the backwoods to cooking food with fresh produce that my farmer friends helped grow, the work of my days here at A Rocha was varied and joyful."

Selah, program participant

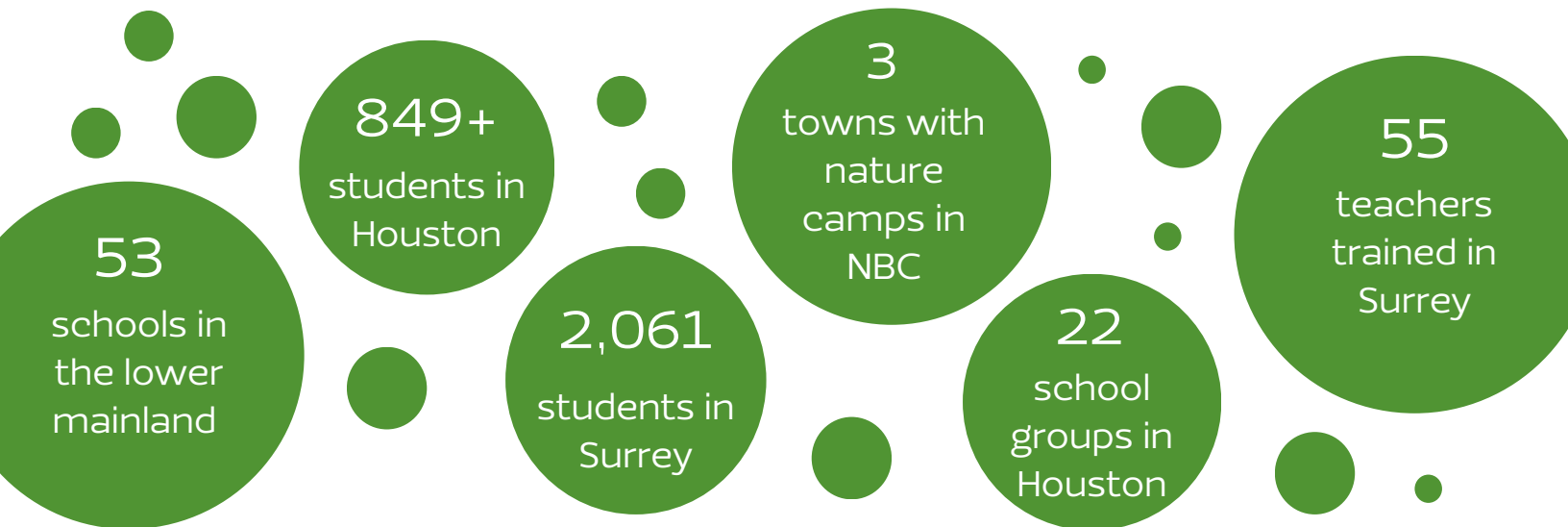


## EMPOWERING TOMORROW'S EARTHKEEPERS



### INSPIRING ALL AGES

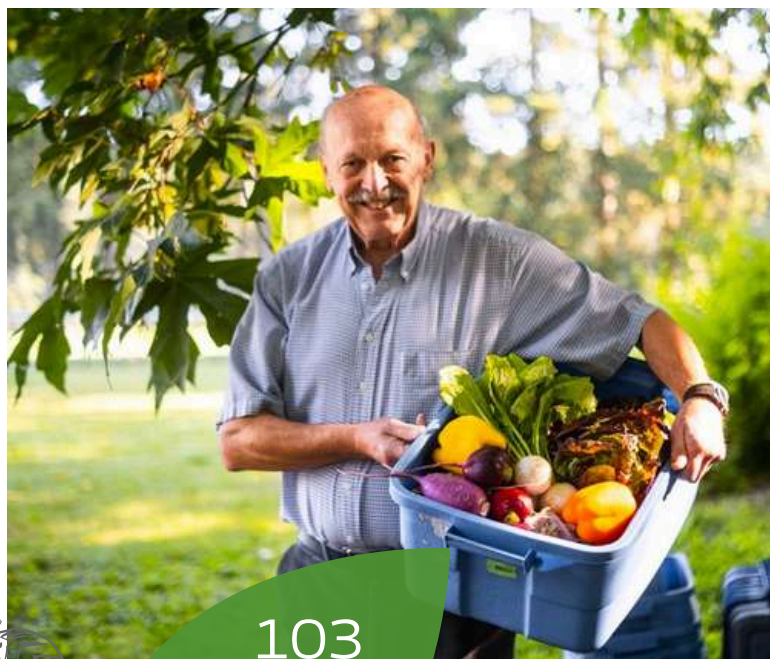
- Inspiring people of all ages to care for the environment through hands-on education
- Children equipped & inspired through daycamps & school field trips
- Training teachers at Pro D Days
- Partnering with schools for the Watershed Project where students & teachers are equipped to monitor the health of the creeks in their backyard.



"My staff and I attended a Pro-D workshop where we were flabbergasted with the amount of information we learned about the Tatalu. For example, mussels attach their embryos to salmon's gills and detach in the Tatalu making them freshwater mussels!"

Kristy Crnkovich -- Principal at Xw'epiteng Elementary School





## »»» FEEDING BODIES & SOULS

- Farm to Families serves vulnerable families & youth, newcomers to Canada, and seniors through food literacy programs and food donations.
- In 2023–24, we engaged 1000+ children, youth, adults and seniors!
- We provided 103 learning sessions and events, and worked with 14 different community partners.

103

sessions on gardening, cooking, etc.

1,000+

children, adult, and seniors engaged

14

community partners



## community food security

A Rocha's Farm to Families Program chairs the [Community Action Food Initiative \(CAFI\)](#) table. CAFI is a multi-stakeholder group seeking creative and collaborative upstream solutions to food insecurity in the South Surrey / White Rock Peninsula!



# RETREAT & HOSPITALITY



## »»» CREATING COMMUNITY

- At the Guest House, we hosted 44 retreat groups.
- We welcomed 1,000 guests (retreats & overnight stays).
- A lovely residential volunteer family from Switzerland, the Gonins, were here for 6 weeks, engaging in our conservation & agriculture work
- We served 8,244 meals in 2023 and 2024.
- The Harvest Celebration & the Farm Table Feast welcomed over 1,000 people.

"You taught us about growing together, inspiring one another without forcing into a one-size-fits-all model, showing a non-idolizing love of creation, pursuing a clear goal without pressure, with hope and passion as well as joy and freedom, balancing the burden for "the fallen" with the enjoyment and amazement of "the beauty".

Michael Gonin, residential volunteer



53

## YOUTH TRAINED IN 2023-24

RESIDENTS, SUMMER WORKERS, AND MORE



**A ROCHA**  
CANADA

# CAPITAL UPGRADES

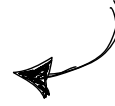
## BC CENTER IN SOUTH SURREY



### Phase 1 – Prep the soil



Electrical upgrades completed site-wide with underground electrical and wifi (Completed in 2024)



### Phase 2 – Sow the seeds

Glass Greenhouse to propagate seedlings and provide a hands-on learning space for farm-based education (Completed in 2024)



### Phase 3 – Feed the soil with compost and water



Purpose-built Farm Shed for farm operations, including vegetable washing and processing, equipment storage, food storage, and farm office (Completed in 2024)



**Thank you to the many donors and grant partners making upgrades possible!**

The Nature Centre in Houston expanded its building in 2023 to have an indoor classroom. Now the hatchery that holds thousands of salmon fry can receive visitors all year round, from small kids to seniors, and offer education programming, hospitality and interactive immersive experiences. It's worth a visit!



# LOOKING AHEAD TO 2025/26

## The Yellow Barn & Operations



### Phase 4 – Harvesting!



The four-season, Conservation-Education Repurposed Barn will be the heart of A Rocha's BC Environmental Centre, increasing capacity for hospitality, enabling visitors to learn about local conservation, and inspiring them to get involved.

The Conservation Education Centre building will include:

- welcome centre,
- farm market cafe,
- conservation interpretive classroom,
- art installation
- accessible lift and washrooms,
- event capacity,
- teaching kitchen,
- and office space.



Watch [the video](#) about the Conservation Education Centre.



Our plan is to start construction in 2026.

Would you join us?



Would you like to be part of the operations support for our Northern BC Nature Centre, or support the operations for our BC Centre? We would be glad to tell you how your support makes a difference!



**DONATE** ❤️

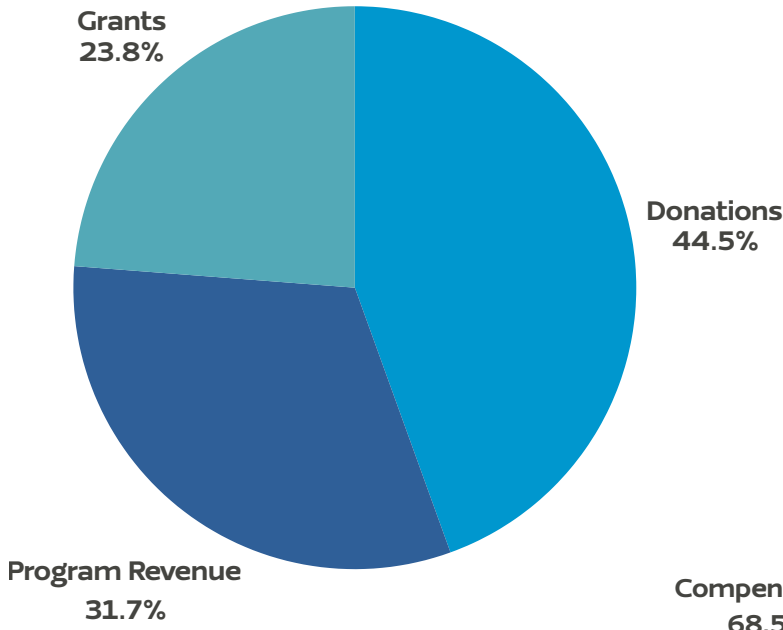


**A ROCHA**  
CANADA

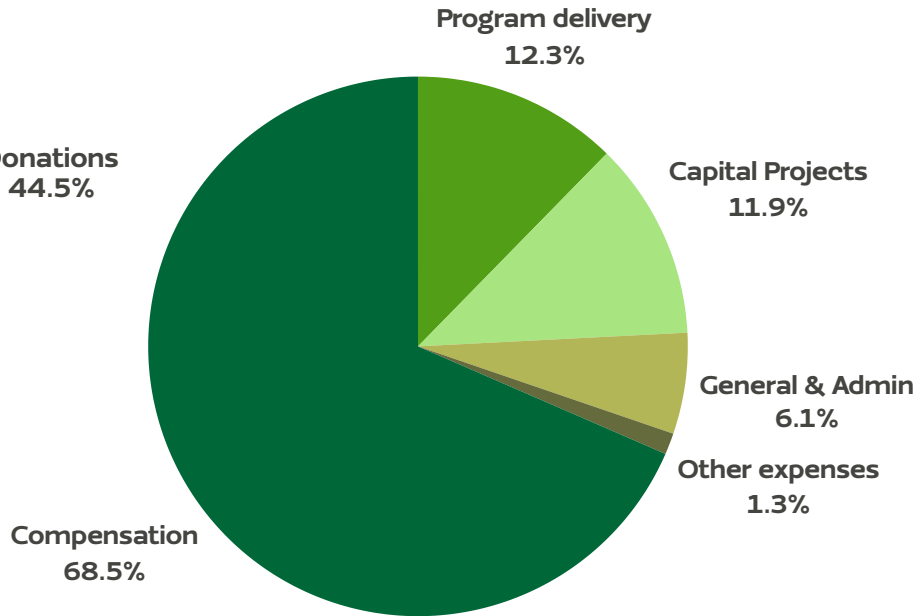
# THE FINANCIAL PICTURE

2024 BUDGET: \$2.2 MILLION

## Income



## Expenses



THANK YOU  
SO MUCH!

DONATE 



# A Rocha Partners



PACIFIC SALMON  
FOUNDATION



metro vancouver



HABITAT  
CONSERVATION TRUST  
FOUNDATION



SEMIAHMOO  
FIRST NATION



CANADIAN WILDLIFE  
FEDERATION  
FÉDÉRATION  
CANADIENNE DE LA FAUNE

eco  canada



Surrey Schools  
LEADERSHIP IN LEARNING



Fisheries and Oceans  
Canada



TD Friends of the  
Environment  
Foundation



sitka foundation

Vancity

 Regent  
College



TRINITY  
WESTERN  
UNIVERSITY



TYNDALE  
• UNIVERSITY COLLEGE & SEMINARY •

and many more!

"I deeply value the ongoing role A Rocha has as a catalytic Christian creation care organization. We view A Rocha as a valued and trusted strategic partner."

-David Wells, General Superintendent of the Pentecostal Assemblies of Canada