

ISSUE 44 FALL 2017

A Rocha Annual Review

CANADA
A ROCHA
Environmental Stewardship

*Inspiring Hope,
Caring for Creation*



MISSION:

A Rocha is committed to the conservation and restoration of the natural world. Working from a watershed perspective with an eye to the thriving of human as well as non-human communities, we partner with local landowners, municipalities and other stewardship groups to carry out conservation science research and habitat restoration projects in BC, Alberta, Manitoba and Ontario.



IMPACT:

Did you know A Rocha is studying and improving habitat for 14 nationally designated Species at Risk on over 300 hectares of land in BC, MB and ON?

“

The Semiahmoo First Nation have relied on the abundance of resources in Boundary Bay for food and livelihood from time immemorial. The name Semiahmoo means “lowering to feed” because the bay stretched out so far and there was such an abundance of fish and shellfish for the people to eat. Now there is so little, the water is contaminated and shellfish harvest is illegal. We value A Rocha’s efforts to work collaboratively to improve the health of Boundary Bay, especially the shellfish beds in Semiahmoo Bay and the water quality of the Little Campbell River. We have a long-standing partnership with A Rocha -- they are one of our warriors. We look forward to continuing our work together for the good of all. In our SENĆOŦEN language, we’d say, “Nutsa maht swkáleḡen,” a Salish phrase meaning “unity or working together as one.”

- Joanne Charles, Semiahmoo First Nation Councilor

YOU:

Check out our conservation work arocha.ca/conservation and learn about our new salmon hatchery in Northern BC, species studies in Surrey, and bio-blitzes in Ontario.



IMPACT:

Over 3,600 students experienced the wonder of creation through A Rocha's education programs in BC, Manitoba and Ontario this past year.



“

The trees here are so beautiful I can't take my eyes off them.

- A Grade Two student in response to his first experience walking through a forest

MISSION:

At Rocha, we believe that hands-on learning in creation is transformational. Therefore, whether kids participate in a week-long day camp or a 3-hour field trip, they're outfitted with nets for pond dipping, magnifiers for examining bugs, and binoculars for identifying birds. Our educational programs for adults include a 3-month internship program in BC and an eco-discipleship program in Ontario, as well as evening or day-long workshops and multi-day retreats.

YOU:

Bring A Rocha's message of creation care to your community. Check out arocha.ca/goodseedsunday for resources or arocha.ca/education to book a field trip at one of our centres.



MISSION:

A Rocha is helping people and places thrive as we practice agriculture that is good for the soil and good for those who eat from it. Our programs include a 100-member Community Shared Agriculture (CSA) program in BC and an Earth to Table project in Ontario serving newcomers to Canada.

“

I love A Rocha. They don't just grow food, they grow community. Their Earth to Table program brings together Canadians and newcomers and is a source of optimism for the refugees they serve. The A Rocha Team takes a real interest in the well-being of the newcomers.

- Shamiran from Iraq, now settled with her family in Hamilton, ON

IMPACT:

A Rocha's gardens fed over 750 people each week during the growing season. Some of those eaters enjoyed the bounty of their CSA boxes, some were guests at an A Rocha Centre, and some were getting their first taste of Canadian-grown veggies shortly after arriving in their new country.

YOU:

Live far from an A Rocha Centre but want to get in on the homegrown goodness? Check out our Community Garden Network pages and transform a corner of your church's lawn into a garden plot: arocha.ca/community-garden-network

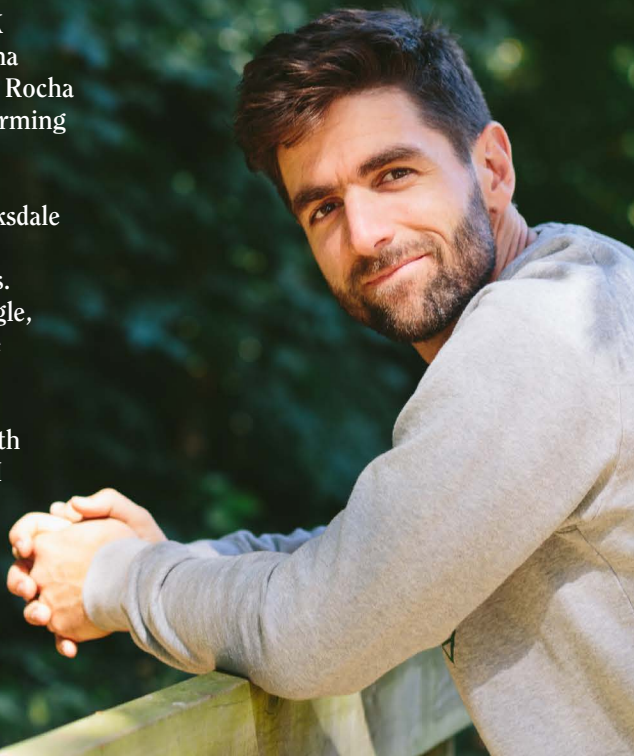


Story Of Impact

After nine years of studying and working in the UK architectural world, Phil Hurrell and his wife Emma were ready for some time to rest and refocus. An A Rocha internship allowed them to reconnect with their farming childhoods and their Christian faith.

Though he expected his time at the A Rocha Brooksedale Centre to be rewarding, Phil was surprised by how “fundamentally transformative” the experience was. He writes, “Here I found joy, hope, humility, struggle, authenticity and rich community. But it’s been the renewing of hope and faith that most excites me.”

When asked how his views on creation care and faith have changed, Phil had this to say: “If I’m honest, I think my faith had been, to some extent, lived out from a place of fear and guilt, through a lack of understanding of my communion with God. It turns out that fear and guilt are not life giving, but lead to denial and resignation. The same can be said about framing any big environmental issue through the same lens of fear and anxiety.”



Phil experienced first-hand a new way of living at the A Rocha Centre in Surrey, BC: “Brooksedale is a community that recognizes the brokenness of both our systems and ourselves; nevertheless, those within the community live from a place of hope with a posture of grace and gratitude. Here I learned how to celebrate the intrinsic value of all things, which leads to a celebration of both biological and human diversity. I learned how to work with nature in a way that is beneficial for both the natural world and for humans as well. Basically, through this time I came to recognize how deeply connected to nature and ultimately the presence of God I am, and in this recognition I’ve found rest and restoration.”

YOU:

Find out more about A Rocha internships in BC and our Eco-Discipleship program in Ontario at arocha.ca/internships and arocha.ca/eco-discipleship



MISSION:

A Rocha's environmental centres are places of restoration, hope and transformation. Here interns, volunteers and visitors are invited into the warmth of the A Rocha community and into the goodness of practical creation care.



“

Our family had an amazing day celebrating the harvest season out at A Rocha! The kids are as excited about going to A Rocha as going to an amusement park...getting their hands dirty and working hard has never been so easy or so fun!

- Kait Lilley, mother of four future earthkeepers

IMPACT:

Over 6,000 people of all ages visit one of our centres annually. Some come for a month or longer to volunteer at Brooksdale in BC. Some come for an afternoon hike at the Pembina Valley Field Station in Manitoba. Some come for a week-long day camp at Cedar Haven Farm in Southern Ontario. All come away inspired.

YOU:

Please visit! Check out the myriad of possibilities for staying overnight, volunteering or joining in one of our education programs: arocho.ca

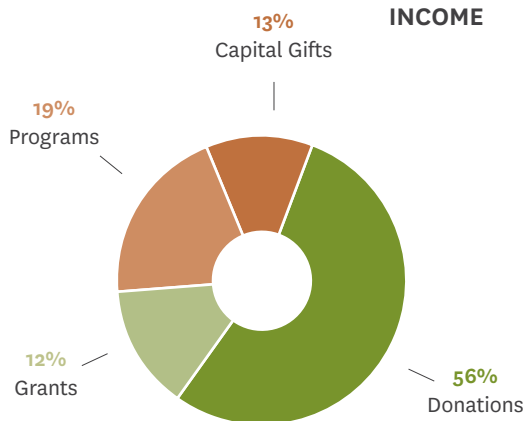
Financial Information

Report for fiscal year ending April 30, 2017

INCOME

2016-2017

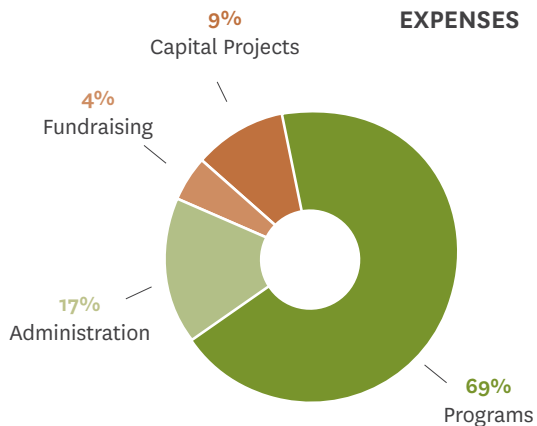
Donations (Individuals, Churches, & Corporations)	\$1,127,873.2
Grants (Foundations & Government)	\$238,027
Environmental Centre Revenue & Program Fees	\$372,669.54
Operating Subtotal	\$1,738,569.74
Capital Campaign Gifts	\$266,059.11
Total Revenue	\$2,004,628.85



EXPENSES & CAPITAL ASSET INVESTMENT

2016-2017

Programs (Conservation, Education, Sustainable Agriculture & Brooksedale, Hamilton & Pembina Valley Centre Operations)	\$1,399,256.09
Administration	\$355,780.07
Fundraising	\$87,622.57
Operating Subtotal	\$1,842,658.75
Capital Campaign & Improvements	\$200,372.63
Total Expenses	\$2,043,031.38*



A Rocha Canada Conservation Foundation:

In 2016, the foundation received \$330,227 and purchased Hazelmere (\$339,907 of payments for this year).

* This fiscal year additionally includes capitalized improvement expenses (e.g. Hazelmere etc) of \$139,463

Thank
You!

We are heartily grateful for the public, government and private funders and foundations that have supported our projects this past year. And we are equally grateful to the individual donors spread across Canada who live out an ethic of creation care in their lives and their giving to A Rocha. Thank you!



GET CONNECTED: [@AROCHACANADA](https://www.instagram.com/AROCHACANADA)



Join us in engaging thousands of people every year in the work of caring for creation. We can make a difference together! For opportunities to give through estate planning please contact our office.

CANADA
A ROCHA
Environmental Stewardship

INTERNATIONAL
A ROCHA
Conservation and Hope



Photography credits: All photos were taken by Alyssa Lortie except for the boy with the stick on the back page.

WWW.AROCHA.CA

**MAKE CHEQUES
PAYABLE TO:**

A Rocha Canada
1620 192nd Street
Surrey, BC V3Z 9V2
Canada

TO DONATE

T: 1.604.542.9022
W: arocha.ca/donate/
E: canada@arocha.ca

CHARITY NUMBER:

866638943RR0001

**A ROCHA CANADA
BOARD OF DIRECTORS**

Jeremy Bell (Chair), John Diack, Antoinette van Kuik, Ledford Lilley (Treasurer), Sandra Manning, Ken Marr, Karen Reed, Mark van der Woerd, Barbara Wernick, Bill Wong

**A ROCHA CANADA
BOARD OF REFERENCE**

David Bentall, Tom Cooper, Geoff Cowper, Lorna Dueck, Neil Graham, Paul Kariya, Preston Manning, Edwin Redekopp, Shaila Visser, Rikk Watts, David Wells, Loren Wilkinson