

# A ROCHA

**KIDS  
RAVE  
ABOUT  
FUN ON  
THE FARM**  
PAGE 10

**ANNA BAIRD  
SHARES ABOUT  
HER EXPERIENCE  
AT THE A ROCHA  
CENTRE IN BC**  
PAGE 07

**OVER  
200 NEW SPECIES  
DISCOVERED**  
PAGE 16



**A ROCHA**  
Environmental Stewardship

*Inspiring Change.  
Caring for Creation.*

**10 year**  
Anniversary  
Edition



# TABLE OF CONTENTS

“ A Rocha  
lives out their  
commitment—  
feet on the  
ground, hands  
in the dirt,  
hearts in the  
community.”

—A Rocha Friends  
Survey respondent, 2011

## *Inspiring Change. Caring for Creation.*



Getting Grounded at A Rocha Centres 04

Reflecting Back on Ten Years 05

People in A Rocha 06

Mobilizing Churches 08

Living Lighter 09

A Rocha Across Canada 10

New Brand for A Rocha Canada, Financial Stewardship 14

Taking Root in Southern Ontario 15

New Species in Papua New Guinea 16

Dig This | Community Gardens 18

Lead Writer & Editor, **Leah Kostamo**  
All photos provided by A Rocha Team



# GETTING GROUNDED AT A ROCHA CENTRES

## A Rocha Brooksdale Environmental Centre

*Surrey, BC*



Originally an upscale riding estate, the A Rocha Brooksdale Environmental Centre looks like something out of a fairy tale with its Tudor-style buildings, heritage barn and, most importantly, the Little Campbell River running through it. A hub for practical conservation, education and sustainable agricultural work, the Centre regularly hosts hundreds of volunteers and scores of interns who come to study wildlife, restore habitats, plant gardens and teach school kids. Since this work is done alongside others who share a passion for a sustainable future, interns and volunteers are transformed and go away more deeply committed to honouring the Creator by caring for creation.



- Check out upcoming Centre events on our website at [arocho.ca](http://arocho.ca)
- Come stay as an intern or volunteer
- Use our Centres as a base for a small group event or retreat

## A Rocha Prairie Field Station

*Pembina Valley, MB*



A Rocha's centre in southern Manitoba is nestled on the bluffs of the Pembina Valley overlooking the Pembina River. In the last 18 months, nearly 3,000 visitors have made their way to this special and picturesque place. From students studying the watershed, to educators participating in our Learning Institute, to those seeking solitude off the beaten path, all have been welcomed to experience God's creation first hand. Our community outreach and hard work were acknowledged recently with an "Award of Distinction" at a Regional Tourism Awards Banquet.

### CONTACT INFORMATION

**Brooksdale Environmental Centre**  
[british.columbia@arocho.ca](mailto:british.columbia@arocho.ca)

**A Rocha Prairie Field Station**  
[manitoba@arocho.ca](mailto:manitoba@arocho.ca)

# REFLECTING BACK ON TEN YEARS

A Rocha's beginnings in Canada are a quick ten year hop, skip and jump from where we stand today. In those early "starting blocks" days, A Rocha Canada was a pretty humble affair. We had a whopping staff of three and a desk in a North Vancouver basement that doubled as a church nursery on Sundays. Our conservation and education activities were limited to a small Coho salmon survey in Coleman Creek and a one-week, inner-city day camp in East Vancouver.

Today over 25 staff, hundreds of supporters and numerous community groups are spread across Canada, with particular concentrations in BC, Alberta, Manitoba and Ontario. Our activities have expanded to include a wide variety of species surveys, practical conservation projects, educational programs and sustainable agriculture ventures. We've moved from our small centre in BC to the amazing Brooksdale property and have established a thriving Field Station in southern Manitoba. The gardens in our Community Garden Network have fed thousands, many of whom are struggling with poverty.

A Rocha's rapid growth in Canada has been astounding. But, in many ways, A Rocha is still a very humble affair. The values that carried us in those early days are the values that carry us still: a commitment to people and places. In botanical terms, we've grown from a fragile sapling to a mature tree, but our DNA is the same; and while our branches have spread, our roots have gone deeper. We still linger over lunches with interns and guests at our Centres, because in mealtimes we find fodder for authentic relationships. We still take time to help an individual child dip a net into a pond and pull out a tadpole so she can experience the wonder of creation first-hand. We are still awestruck at the sheer numbers and beauty of the raptors migrating through the Pembina Valley of Manitoba. And we still give thanks when we pull a carrot from our gardens, recognizing that it is provision from the hand of a generous God.

I am optimistic about A Rocha's future because our growth is anchored by roots that go deep into the subterranean grace of God. By this grace we are sustained and have come to recognize all of creation as a marvel worthy of care.



**MÄRKKU  
KOSTAMO**

**Executive Director**  
A Rocha Canada



**Find us on Facebook**  
[facebook.com/aroachacanada](https://facebook.com/aroachacanada)

**Visit us online at [arocho.ca](http://arocho.ca)**



# PEOPLE IN A ROCHA



Why be passionate about creation care? And why with A Rocha? We asked a staff member, two interns and a faithful volunteer to reflect on their own involvement with A Rocha. Here's what they had to say.



## STAFF

### Ruth Des Cotes, Environmental Educator

I believe that engaging people directly in the world around them—whether that's through holding a frog or digging in the soil—opens a window to wonder that is fundamental to achieving conservation aims. Wonder is what transforms mere knowledge into caring action. Therefore, A Rocha's education programs are, first and foremost, experiential. Kids in our programs are outfitted with nets for pond dipping, magnifiers for examining bugs, and binoculars for identifying birds. I try to give kids the space and place to really encounter creation. I remember one energetic and quite distracted ten year-old boy attending one of our day camps. I worried he wouldn't be able to quiet himself enough to really encounter creation. I was overjoyed when, at the end of the camp, he reported that the best part of the whole week was the daily times of silent observation he spent in the forest.

## VOLUNTEER

### Harold Neufeldt

After 30 years working as a landscape architect, it's wonderful to be digging in the dirt and handling seedlings rather than just designing green spaces on paper. Coming down to the A Rocha Centre in Surrey once or twice a week to lend a hand to the Community Shared Agriculture Project has allowed me to put my creation care convictions into action. It's been great to help provide local and low-income families with organically grown, quality vegetables. Tuesday and Friday harvest days are especially fun as I help fill 30 or so Rubbermaid bins so full they nearly overflow with fresh veggies. I'm thrilled to be able to help others live more lightly on the earth by connecting them directly to the source of their food!



## INTERNS

### Lynton & Anna Baird

What a gift to be able to take a year off from our jobs in chemistry and education in New Zealand to learn and serve with A Rocha in Canada and Kenya. We thoroughly enjoyed our time in both countries doing species monitoring and habitat restoration projects, and appreciated the balance we found between a concern for people and a concern for the rest of creation. A Rocha recognizes that people need to use the earth's resources to survive, but the staff and volunteers showed how people can live as stewards—fostering the health of both human communities and the ecosystems in which they're located. We are excited to return to New Zealand and apply what we've learned in the fledgling A Rocha project there.



CHANGE YOUR LIFE

## BECOME AN INTERN WITH A ROCHA

### Internships available in:

- Conservation
- Environmental Education
- Sustainable Agriculture
- Sustainable Development

### SITES

A Rocha Brooksdale Environmental Centre, Surrey, BC  
A Rocha Prairie Field Station, Pembina Valley, MB

### TERM

Three months to one year

Contact [interns@arocha.ca](mailto:interns@arocha.ca) for more information.

*Serve, Learn, Grow as an A Rocha Intern*



# MOBILIZING CHURCHES

A Rocha is joining with churches to inspire and mobilize their members to be faithful stewards of God's world. To do this, we are **preaching from pulpits, leading Sunday school classes, and providing resources for churches** to use in their own contexts. Our goal is to partner with 50 churches every year.

One such church is New Life Christian Reformed Church in Abbotsford, BC. The church was already home to a handful of people who were passionate about caring for creation when A Rocha came on the scene. With A Rocha's help, the message of creation stewardship is fanning out into the wider congregation.

New Life's pastor Nathan Elgersma is tremendously pleased by the partnership. He recently reflected on how the sermon given at his church by A Rocha's Education Director, Rick Faw, both challenged assumptions about how the earth is used and also grounded the environmental discussion in the hope of God's reconciliation of all things (Colossians 1). "In essence," said Nathan, "A Rocha is helping us frame the question of creation care within the larger context of justice and mission."



“The teaching we received from A Rocha has helped lay the theological foundation for our church to take practical steps toward caring for creation.”

—Nathan Elgersma  
Pastor



TO BOOK AN A ROCHA SPEAKER  
FOR YOUR CHURCH CONTACT US  
AT [ACTION@AROCHA.CA](mailto:ACTION@AROCHA.CA)

## Free Download: “Why Should Christians Care for Creation?”

This 15 minute video, featuring theologians and scientists, lays out the biblical basis for creation care and is perfect for personal, small group or Sunday school settings. Click on “resources” on the homepage of A Rocha Canada's website [arocha.ca](http://arocha.ca) and follow the link to videos.

# LIVING LIGHTER



“We care for only what we love. We love only what we know. We truly know only what we experience.”

—Steven Bouma-Prediger

The first step toward living lighter—toward really rolling up one's sleeves and caring for creation—is to get to know one's own place. Don't get us wrong: an understanding of worldwide environmental problems is necessary and valuable, but true understanding and experience of one's local environment in all its botanical and zoological uniqueness is transformative.

So, here's a challenge: get to know your neighbours, the guy with the scruffy beard down the street, certainly, but also that bird twittering in the tree at the end of the block. Oh, and learn the name of the tree as well.



A little quiz to help you get started:

## Where in the world are you?

1. What is the name of your watershed?
2. How is your home's electricity produced?
3. Name five edible native plants in your area.
4. From what direction do winter storms generally come in your region?
5. Where does your garbage go?
6. What are the easiest vegetables to grow in your soil and climate?
7. Name five trees in your neighbourhood. Are any of them native?
8. Name five resident birds in your area.
9. Name five invasive species (either plant or animal) in your neighbourhood.
10. What is the first flower to bloom in spring in your neighbourhood?



HOW DID  
YOU DO?

Send your answers to [living.lighter@arocha.ca](mailto:living.lighter@arocha.ca) for a chance to win **1 of 5** herb garden starter kits with seeds and information to get you started.



# A ROCHA ACROSS CANADA: PROJECT HIGHLIGHTS



## PROJECT HIGHLIGHT 1

### Fun on the Farm

Every second and fourth Saturday of the month the A Rocha Brooksdale Environmental Centre plays host to a troop of kids and their families who come to collect eggs, plant gardens, make bread, and explore creation. Some are refugee families just finding their footing in Canada, others are single-parent families living on low income—all are looking for some good ol' fun on a farm! Run in partnership with World Vision, A Rocha's *Fun on the Farm* program is entering its second season of interactive and experiential learning, opening the world of creation and sustainable agriculture to those who otherwise might not be able to enjoy it.

World Vision  
Canadian Programs

Project Partner



SPONSOR A FAMILY IN NEED TO PARTICIPATE IN FUN ON THE FARM FOR ONLY \$100

Go to [arocho.ca/donate](http://arocho.ca/donate) to sponsor.

“ I can't imagine a better place to be on Saturdays. Seeing deer bound over the Little Campbell River and the salmon running up it has been exhilarating! My daughter has loved catching frogs, hatching baby chicks, and singing in the orchard. We are so blessed to have the opportunity to share life on the farm! ”

—Karen Brey



## PROJECT HIGHLIGHT 2

### Just Growing in Winnipeg

A Rocha's sustainable agriculture project in inner-city Winnipeg involves folks on the economic margins in the wonderful adventure of planting, growing, harvesting, and canning their own food.



Project Partner

“ The Just Growing day camp was all my child talked about for the rest of the summer! ”

—Parent of a day camp participant

#### HIGHLIGHTS FROM THE 2010 GROWING SEASON

- Creating over **3,000** square feet of productive garden out of church grounds and front lawns.
- Producing **300** lbs of potatoes, **40** lbs of peppers, **100** ears of corn and way too much zucchini!
- Feeding over **400** individuals living on low income.
- Educating over **30** children who participated in two week-long day camps and harvested veggies, studied butterflies, heard bible stories, and had loads of fun.
- Celebrating on Friday Feast Days throughout the summer and at the Fall Harvest Festival where over **350** people enjoyed a beautiful fall afternoon of live music and delicious food from our own gardens.
- Filming one short and very inspirational documentary by Five Door Films about Just Growing's work. Find it on the web at <http://www.youtube.com/watch?v=mhT3DklmqnE>



**Project Partners:** The Winnipeg Foundation, St. Margaret's Anglican Church, Green Team Manitoba, HRSDC Canada Summer Jobs, Portage Avenue Mennonite Church.



SPONSOR A LOW-INCOME FAMILY

For a full season of organically-grown produce from our Surrey Community Garden - \$550 (only \$4/day)

Go to [arocho.ca/donate](http://arocho.ca/donate) to sponsor.



## Multicultural Outreach

A Rocha's work is about more than just studying birds and bugs or growing beets and broccoli. It's about people—helping people live as faithful stewards of creation. It's also about our larger Christian witness as we act thoughtfully to address our most pressing local environmental issues. With the addition of Samuel Chiu to the A Rocha team, we are now engaging a new constituency of Canadians who have often found themselves outside conservation circles. Through workshops, radio broadcasts, and newspaper articles Samuel is empowering Christians in multicultural communities across Canada to take seriously their role as earth-keepers.

“ I have been granted a platform to encourage communities-in-Christ to both understand more comprehensively God's heart and love for all creation and to integrate creation care into Christian spiritual formation. ”

—Samuel Chiu

get  
INVOLVED

To learn more about A Rocha's multicultural work in Canada, procure resources, or book Samuel for a speaking engagement, contact him at [samuel.chiu@arocha.ca](mailto:samuel.chiu@arocha.ca).



## Hawkwatch Breaks Records

The Pembina Valley of Manitoba is home to one of North America's premier raptor migration corridors. A stunning number of eagles, hawks and falcons funnel through this valley on route to and from their summer breeding grounds in the north, and for the past seven years A Rocha has done its part to document this marvel of creation. During the 2011 Spring Hawkwatch A Rocha counters, including Paul Goossen, Al Schritt and an enthusiastic crew of volunteers tallied a record breaking **13,208 raptors!**

For details see [hawkcount.org](http://hawkcount.org)



### Numbers by Species in 2010

Species	Number
Bald Eagle	1208
Northern Harrier	141
Sharp-shinned Hawk	919
Cooper's Hawk	76
Red-tailed Hawk	8274
Golden Eagle	95
Merlin	34

get  
INVOLVED

JOIN THE HAWKWATCH

Donate \$50 to Conservation Projects at [arocha.ca/donate](http://arocha.ca/donate)

## Talking Conservation

It was standing room only at A Rocha's Conservation/Nature Talks held in southern Manitoba this past winter.



The series is part of A Rocha Prairie's Learning and Interpretation program, complementing our summer conservation activities at the A Rocha Prairie Field Station and in the southern Manitoba region. Each session provides important learning for A Rocha volunteers and staff, but also aims to give the wider public the tools and knowledge to more fully integrate a conservation ethic into their lifestyles.

### Good Stewardship is Good Business,

presented by businessman David Weiss, an entrepreneur working in the recycling field, explored the ways that going green is good for business.

### Raptors Over the Pembina,

presented by Paul Goossen, showcased data collected by the A Rocha team of birders which has made our Hawkwatch monitoring site in southern Manitoba the highest spring raptor count in Western North America.

### Living Simply for the Earth,

presented by Mark Burch, focused on the over-consumptive habits of North Americans and pointed to the need for "voluntary simplicity" to help ensure a sustainable future.

### Invasive Plants in the Pembina Valley,

presented by Cheryl Hemming of the Invasive Species Council of Manitoba, offered practical tips on how to prevent, detect and eradicate invasive species in the area.



# NEW BRAND FOR A ROCHA CANADA

A Rocha has undergone a re-brand to improve and simplify communication with our A Rocha friends.

- 1


- 2

## A ROCHA

Environmental Stewardship
- 3

*Inspiring Change. Caring for Creation.*
- 1

*Simplified and updated A Rocha logo. A clean, fresh new look.*
- 2

*Summarizes and captures activities we engage in. Our passion is to be wise stewards of God's creation.*
- 3

*Our goal is to inspire others to constantly learn and change how they live to better care for creation.*

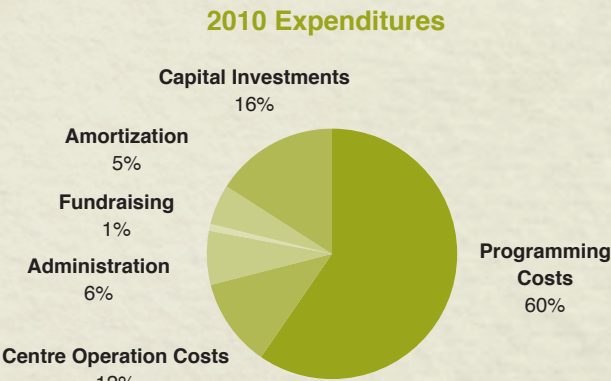
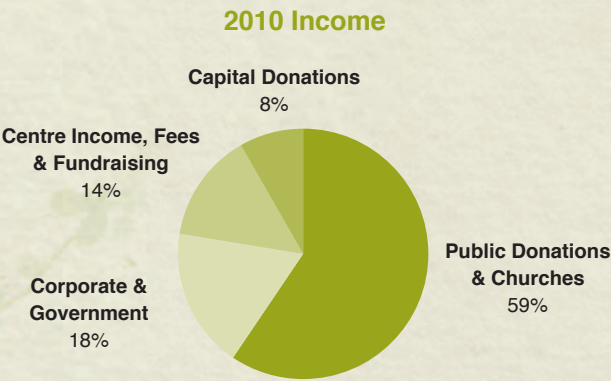
## Financial Stewardship

### Income

	2010	2009
1 Public Donations & Churches	520,825	428,195
2 Corporate & Government	158,744	165,238
3 Centre Income, Fees & Fundraising	123,888	110,562
<b>Operating Subtotal</b>	<b>803,457</b>	<b>703,995</b>
4 Capital Donations	72,490	75,744
<b>Total Income</b>	<b>875,947</b>	<b>779,739</b>
Gain on Sale of Capital Asset (See Note)	387,906	

### Expenditures & Capital Asset Investment

	2010	2009
1 Programming Costs	538,541	449,386
2 Centre Operation Costs	103,251	98,337
3 Administration	49,562	74,155
4 Fundraising	8,151	22,713
5 Amortization	46,999	
<b>Operating Subtotal</b>	<b>759,813</b>	<b>644,591</b>
6 Capital Investments	143,992	99,711
<b>Total Expenditures</b>	<b>890,496</b>	<b>744,302</b>



# TAKING ROOT IN SOUTHERN ONTARIO

A Rocha's roots in southern Ontario are spreading! Building on the networks, partnerships and environmental stewardship accomplished over the past three years through the A Rocha GTA Action Group, we are expanding our work in southern Ontario to include community garden workshops, creation care outreach events, and other partner projects in cooperation with various Christian communities, including Tyndale University College and Seminary and the Chinese Christian community of North Toronto and Markham.



Trail Maintenance,  
Starcliff Nature Reserve



Planting Day,  
Good Soil Community Garden



Shrub & Tree Planting,  
Warden Woods

## Upcoming Events

Community Garden Workshops—held in partnership with the Bridgeway Foundation, a series of hands-on training sessions providing churches with strategies for reaching the marginalized in their communities through growing and sharing healthy food.

Environmental stewardship activities at Taylor-Massey Creek, the City of Toronto's Riverdale Farm and Oak Ridges Moraine Land Trust's Starcliff Nature Reserve—full mornings of habitat monitoring, controlling invasive plants and building boardwalks and bird boxes.

Community Garden Network *Inspiration Night*—an evening to share ideas, meet like-minded gardeners, and build vision for one's own community garden.

Tyndale Talks—coming this fall and hosted at Tyndale University College, a series on Caring for Creation held in partnership with Mishka Lysack of OIKOS, University of Calgary. Participants will come away with a greater theological and moral grounding for earthkeeping as Christian discipleship.

**Project partners:** Oak Ridges Moraine Land Trust (ORMLT), the City of Toronto, the Taylor-Massey Creek Project, St. David's Anglican Church, Church of the Resurrection, Bridgeway Foundation and OIKOS.



EMAIL [ONTARIO@AROCHA.CA](mailto:ONTARIO@AROCHA.CA) TO GET CONNECTED WITH A ROCHA'S ACTIVITIES IN THE GTA.

Check out upcoming events in southern Ontario on our website [arocha.ca](http://arocha.ca)



# NEW SPECIES IN PAPUA NEW GUINEA

They say there's nothing new under the sun, but A Rocha International, in partnership with Conservation International, proved this much repeated cliché wrong. Together, we undertook three surveys in biologically unexplored forests of Papua New Guinea (PNG). We worked with the Papuan communities who live in and own the forests, without whose expertise the scientific work would have been impossible. Our aim was to gather data on the distribution of plants and animals which would help to protect these unique habitats, and also, we hoped, to discover species new to science.

We were not disappointed! Over 200 new species NEW TO SCIENCE were discovered—nearly 100 insects and 100 spiders, 24 frogs, two mammals and nine plants! These are 200 species that we didn't even know were singing in the great creation choir!

Searching for new species in remote parts of PNG has been a new kind of work for A Rocha. So why do we do it? The fact is, discovering all the species with which we share the planet has only just begun. So far, scientists have named about 1.7 million plants and animals, but there are estimated to be many millions more. Finding, describing and naming species is the first stage in the conservation process.

In PNG, where many forests are now threatened by logging and mining, the need to demonstrate their remarkably rich and unique diversity is urgent. There are, of course, also utilitarian reasons for these expeditions. It may be that species not yet known to science could provide useful foods or drugs. However, as a Christian organization, we are also motivated by our conviction that every species matters because it is part of God's good creation, whether or not it has obvious value for humans. The Psalms tell us that God made everything in his wisdom, and so it is folly to think we should do nothing to halt the pressures that are currently driving so many species towards extinction.

— **BARBARA MEARNS & PETER HARRIS**  
A Rocha International



This new species from New Britain, PNG, a yellow-spotted frog of the genus *Platymantis*, belongs to a group which lays their eggs on land, or in trees, where they hatch directly into froglets, without a tadpole stage.  
© Stephen Richards / Conservation International



The entomologists working the Muller Range of PNG recorded at least 20 bush-crickets new to science.  
© Piotr Naskrecki / Conservation International



This project occurred as a collaboration between Conservation International and A Rocha International, with funding from the Hans Wilsdorf Foundation.



This little possum was first seen in 1985 and was recorded again in the Muller Range of PNG when it came to the team's moth-trap. Genetic analysis has proven it to be undescribed.  
© Stephen Richards / Conservation International



**HAVE YOU SEEN THIS?**

**NEW A Rocha International Videos Online**

There are several new short videos available to watch and download at [arocha.ca](http://arocha.ca)—click on “resources” and find:

**Uganda:** Hear from Sara Kaweesa, A Rocha Uganda's National Director, about how A Rocha is studying and protecting the Lubigi Wetland through its work with the local communities.

**Brazil:** Learn how one innovative church has been turning bottles into brooms.

**India:** Discover how A Rocha has been using chili and tobacco to help solve human-elephant conflict.



These videos have been made by A Rocha's highly talented filmmaker, Melissa Ong, who spent two years based at A Rocha's Centre in BC. They are suitable for use in small groups and in church services.



# DIG THIS | COMMUNITY GARDENS

Imagine serving your family and friends healthy, organic vegetables grown in your own community. Imagine getting to know your neighbours and building relationships across age, gender and racial divides. Imagine reaching out to those in need with the most basic of necessities—food.

If you can imagine all this, then you have a pretty good idea of what A Rocha’s Community Garden Network is all about. Comprised of over 30 churches, universities and neighbourhood groups across Canada—from Victoria to Ottawa—the Community Garden Network links and provides resources for those actively transforming lawns and parking lots into places of provision and hospitality.

To aid groups in their gardening endeavours A Rocha has launched “The Plot Thickens”—a community garden workshop comprised of two full days of training, followed by monthly, hands-on sessions in the garden. An enthusiastic group of nearly 40 participants representing over 20 churches and community groups attended our first workshop, held at the Brooksdale Environmental Centre in Surrey, BC.

“ The community building and intergenerational aspect of the project has been fantastic for our church as seniors work alongside youth and children on our Saturday volunteer days in order to help feed our less fortunate neighbours. ”

—Burl Janz  
Saanich Church Community

Vancity



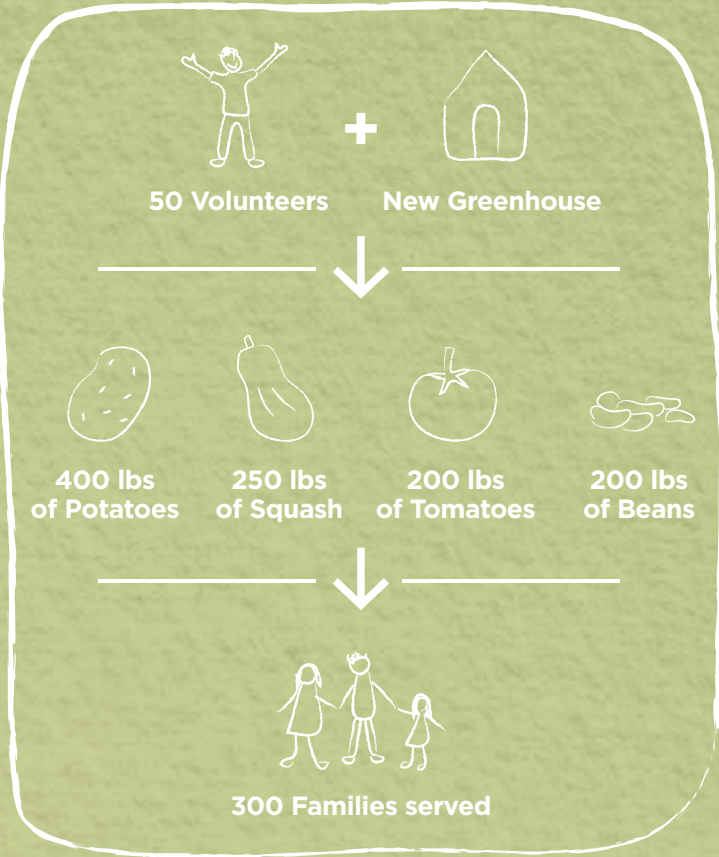
Project Partners



## SEE THE RESULTS

**SAANICH COMMUNITY CHURCH,**  
Victoria, BC (Running 5 years)

**PLOT:** 1/2 acre of former lawn & brambles  
on church property



**BENEFICIARY:**  
Mustard seed Food Bank

Building on the success of our BC workshop, we are taking “The Plot Thickens” on the road to places like Calgary, Winnipeg, Ottawa and Toronto to encourage community gardeners there.



FOR MORE INFORMATION  
CONTACT LUKE WILSON AT  
[ACTION@AROCHA.CA](mailto:ACTION@AROCHA.CA).

- Start a garden at [arocha.ca/communitygardens](http://arocha.ca/communitygardens)
- Check out our Community Gardens at [facebook.com/communitygardens](https://facebook.com/communitygardens)
- Donate **\$150** to give **70 lbs** of vegetables to a family in need at [arocha.ca/donate](http://arocha.ca/donate)







## OUR MISSION

A Rocha is an international conservation organization working to show God's love for all creation.

## OUR VISION: TRANSFORMATIONAL ENGAGEMENT

Restoring salmon habitat, training young scientists, inspiring school children, feeding low-income families—A Rocha is transforming people and places through hands-on conservation projects, environmental education programs and sustainable agriculture initiatives.

## OUR VALUES

### Christian

Underlying all we do is our biblical faith in the living God, who made the world, loves it and entrusts it to the care of human society.

### Conservation

We carry out research for the conservation and restoration of the natural world and run environmental education programmes for people of all ages.

### Community

Through our commitment to God, each other and the wider creation, we aim to develop good relationships both within the A Rocha family and in our local communities.

### Cross-cultural

We draw on the insights and skills of people from diverse cultures, both locally and around the world.

### Cooperation

We work in partnership with a wide variety of organizations and individuals who share our concerns for a sustainable world.



*Thank you for  
your support.*

### To donate:

**604.542.9022**  
**canada@arocha.ca**  
**arocha.ca**

### Make cheques payable to:

**A Rocha Canada**  
**19353 16<sup>th</sup> Avenue**  
**Surrey, BC**  
**V3S 9V2**



**A ROCHA**  
Environmental Stewardship

### A Rocha Canada Board of Directors

Stanley Martin, *Chair*  
Ledford Lilley, *Treasurer*  
John Diack  
Sandra Manning  
Ken Marr  
Barb Wernick  
John Wiens

### A Rocha Canada Board of Reference

Jeremy Bell, David Bentall,  
Tom Cooper, Geoff Cowper,  
Lorna Dueck, Paul Kariya,  
Neil Graham, Preston Manning,  
Edwin Redekopp, Shaila Visser,  
Rikk Watts, David Wells,  
Loren Wilkinson



**FSC**  
**Logo**